

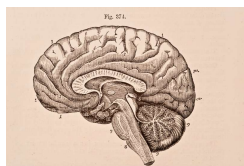
Major-Minor in Cognitive Neuropsychology

Introduction

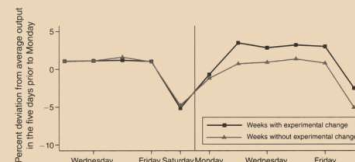
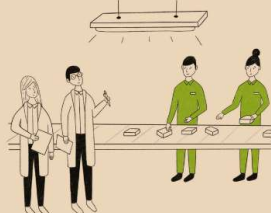
Normal and abnormal brain development/ageing

Approaches for neuropsychological disorders

- ADHD
- Autism
- Traumatic Brain Injury
- Multiple Sclerosis
- Alzheimer
- ...



Cognition
Emotion
Behaviour



Courses Cognitive Neuropsychology

Introduction Clinical Neuropsychology

Block 2

6 ECTS

In this course you learn the effect of innate and acquired neural damage on cognition, emotion, and behavior in adults.

Cognitive Neuropsychology

Block 3

6 ECTS

This course presents experimental methods that enable us to learn about the brain structure and function and its relation to behavior.

Neuropsychological Assessment

Block 4

6 ECTS

In this course you will learn about the plethora of neuropsychological tests and which ones to choose when a patient is referred for diagnosis. Brain structure and function will be closely linked throughout.

Psychological Assessment

Block 1

6 ECTS – Only Major

This course provides you with explanations of the general model regarding diagnostic research and clinical decision-making processes, following the phases of the psychological assessment cycle.

 = minor

 + = major

Subsequent Master's programs

- Master Clinical Neuropsychology
- Master Positive Psychology and Well-being*
- Research Master in Psychology: Individual Differences and Assessment
- Research Master in Social and Behavioral Sciences
- Master Clinical Psychology (Dutch only)
- Master Child and Youth Psychology (Dutch only)
- Master Clinical Forensic Psychology (Dutch only)
- Medical Psychology (Dutch only)

NOTE: From 2025/2026 onwards, the Positive Psychology and Well-being track will be a Social Psychology master. You need to fulfill the admission criteria for the Social Psychology master in order to be eligible for this track.

Career perspectives

Education & Research

junior researcher, PhD student, post-doc, academia

Practice

'basic psychologist'; psychotherapist; own practice, entry into 'GGZ' and specialist programs (incl. training for **clinical neuropsychology**)

Business

administration; neuromarketing

Workplaces

hospitals, nursing homes, rehabilitation centers, specialist clinics, schools, universities, business

School of Social and Behavioral Sciences