

Multi-Factor Authentication

Because we are committed to data protection

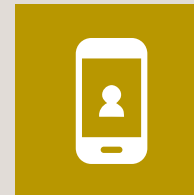
What is MFA?

Multi-Factor Authentication (MFA) is an authentication method whereby you as an online user have to successfully complete multiple steps to get access to an application. At Tilburg University, we use the following steps:



SOMETHING YOU KNOW

Tilburg University username + password.



SOMETHING YOU HAVE

Verification via the Microsoft Authenticator app.



ACCESS

Why MFA?



BETTER SECURITY

80% of unauthorized access is caused by fraudulent use of passwords. MFA provides an 'extra lock on the door', so we can better protect your data.



SMALL EFFORT, BIG IMPACT

It only takes a few seconds of your time. MFA thus has a minimal impact on your workflow.



FEW LOGIN MOMENTS

We have limited the number of times you need to log in. Logging in with MFA once gives you access to multiple applications.

Think before you click: tilburguniversity.edu/security