

DIGITAL
SCIENCES
FOR
SOCIETY

Matchmaking meeting Icon Projects – March 21

DSFS@tilburguniversity.edu

Timetable

- 15:00 – 15:10 Introduction program and program management
- 15:10 – 16:00 Pitches Icon projects number 1 – 4
- 15:30 – 15:35 Library & IT Services
- 15:35 – 15:50 Pitches Icon projects number 5 – 8
- 15:55 – 16:00 Finance & Control
- **16:00 – 16:10 Short break**
- 16:10 – 16:45 Pitches Icon projects number 9 – 12
- 16:30 – 16:35 Mindlabs
- 16:35 – 16:45 Pitches Icon projects number 13 – 15
- 16:50 – 17:00 Information market

Program management

- Academic Lead: Boudewijn Haverkort, Dean TSHD
- Program management:
 - Martin van der Broek, program manager
 - Isis Potters, program officer
- Grant Support: Gijs Paaijmans, Enrica Paradiso

Digital Sciences for Society program

- Tilburg University has unique expertise on the interface of digital technology and socially relevant research
- Strategic priority: further developing and integrating the digital sciences
- € 7 million investment for initiating and facilitating initiatives within three focus areas: *Impactful research, Education, and Organizing collaboration*
- Kick-off with a Call for Proposals for Icon Projects and a Call for Proposals for Growth

Ambition and goals

- Tilburg University contributes (inter)nationally to excellent education, research and impact in the field of Digital Sciences for Society (DSFS)
- Tilburg University has (inter)national reputation as a leading university with unique knowledge at the intersection of human and social sciences and digital sciences
- Students and researchers are equipped for a society and labor market where digital skills are indispensable
- The university is more attractive to students and researchers
- As an authoritative university, Tilburg University develops new knowledge and skills for societal challenges under the motto "Digital Sciences for Society" in co-creation with partners

Digital Sciences for Society

- **A. Research with societal relevance (71%)**
 - 1. Innovating with and reflecting on DSFS
- **B. Education (9%)**
 - 2. Basic knowledge about DSFS
 - 3. Innovating in DSFS
- **C. Organizing cooperation: concerted action (20%)**
 - 4. Community building, communication
 - 5. Coordinating the use of digital infrastructure

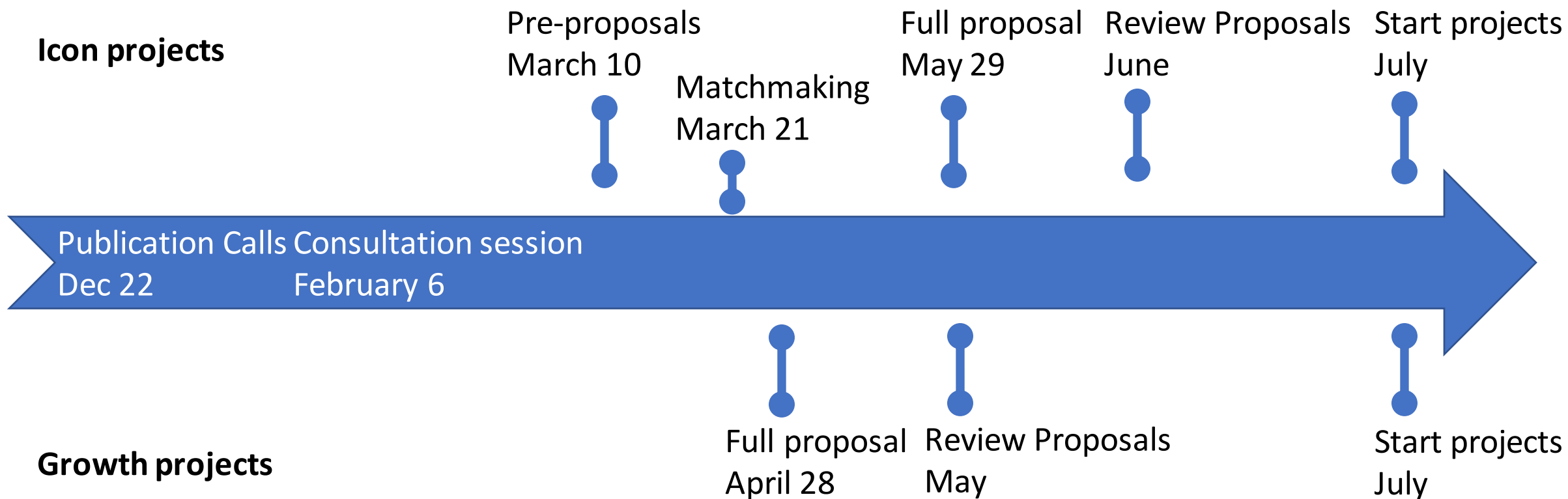
What are Icon Projects?

Icon Projects are research projects with a duration of 3-5 years that profile Tilburg University nationally and internationally as a university on the interface of the digital and social sciences and humanities. They make an important contribution to further strengthening the university's existing knowledge areas and encourage talented researchers to submit innovative initiatives that contribute to the development of a socially relevant research approach.

The Icon Projects will be developed as integral projects in collaboration between researchers and partners in the core areas of 'innovation with digital sciences' and 'reflecting on digital sciences'. We are committed to a multi-disciplinary research approach with societal relevance in collaboration with social partners.

- **Who can submit an application?** Tilburg University faculty can submit an application, as a main applicant or as a co-applicant. Faculty on a zero-hours or temporary employment contract (other than tenure track) cannot act as the main applicant.
Applications are submitted by a consortium of multiple internal and external partners.
- **When?** Preliminary application: deadline is March 10, 2023 | Full application: deadline is May 29, 2023.

Timeline



Tips and suggestions

- Research with social relevance
 - Cooperation with social partners
 - how are research results applicable in society? What is needed to make research results applicable in society?
- Who is responsible for the coordination of the project activities, including the cooperation between Schools and partners?
- The budget should reflect the different type of activities: project management, communication, digital infrastructure, software, prototyping, ...
- Use the provided formats for the full proposal application, budget and letters of support from partners



TiU-LIS Digital Research Support

Research Data Management & Research IT

- **Digital Research Support Team @ LIS (Library & IT Services)**
 - Research Data Management & Research IT
 - DigitalResearchSupport@tilburguniversity.edu
- **Training & consultancy**
 - Research Data Management
 - (Custom) Research IT Support (infrastructure, tools, software)
 - Open Science
- **TSB Research Support Team**
 - Data Stewards Anne Aarts & Stefan Kirsch
 - A.M.W.M.Aarts@tilburguniversity.edu
 - S.Kirsch@tilburguniversity.edu

FAIR

TiU-LIS offers services and support on...

- Research IT
 - High Performance Computing (HPC)
- Data analysis & visualization
 - Jupyter Notebook
- Cloud Computing
 - SURF Research Cloud, AWS
- Open Software
 - Tools (JASP)
 - FAIR coding practices (R, software management)

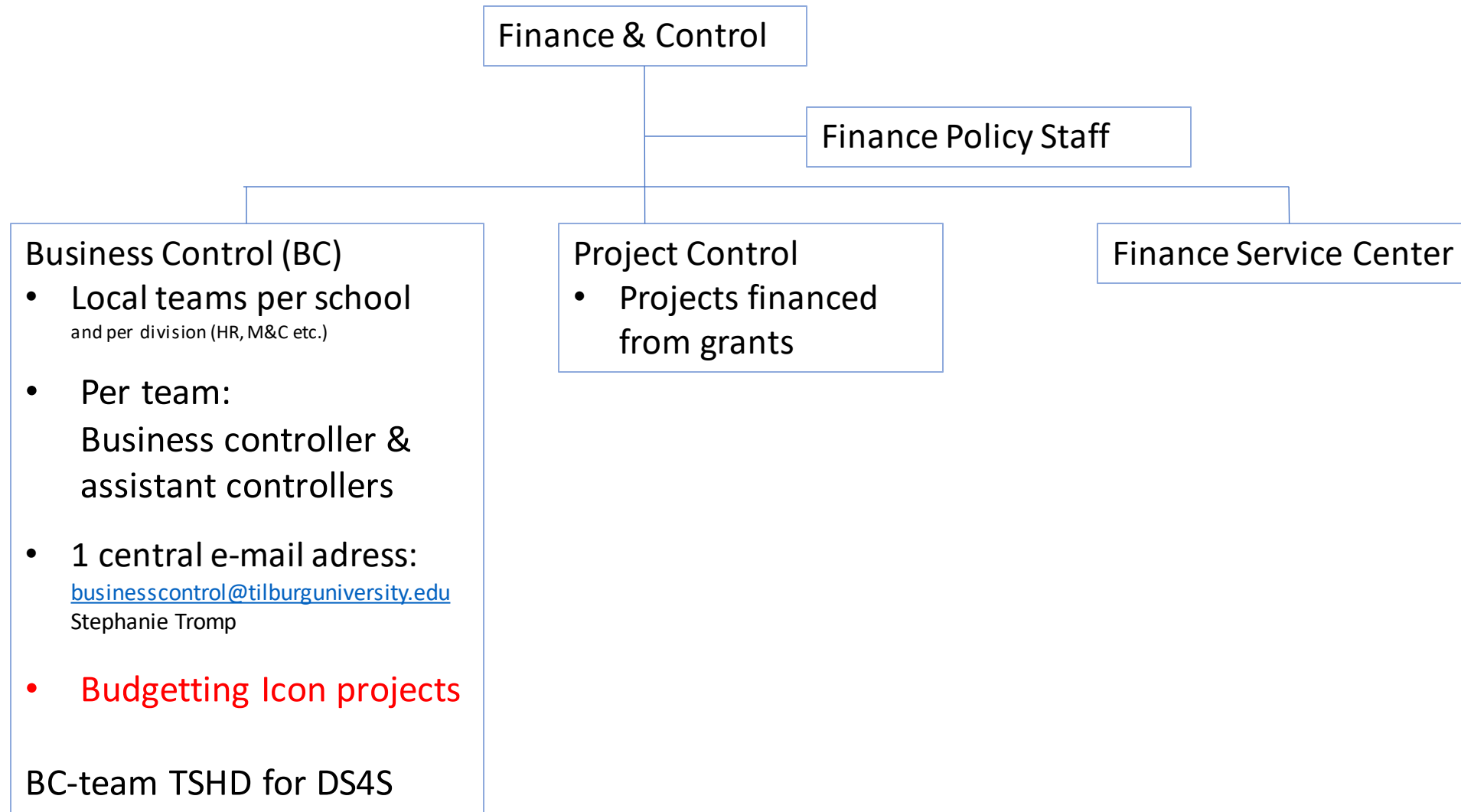
- Research Data Management
 - Data Management Plan (DMP)
 - Data storage and sharing
 - SURF Research Drive
 - Data archiving and data publishing
 - TiU Dataverse ← Open Science Framework & Github
 - Data protection & ownership
 - Data licensing, organising and documenting

Examples of TiU-LIS DRS support

Custom Research IT & Research Datamanagement Support

- Optimization of MySQL database on SURF Research Cloud server for queries
- Making collection of R-/and Python scripts (inter)operable
- Run a virtual machine in the cloud: Docker container / Kubernetes
- FAIRifying data package for university consortium research project

**Support during the entire research process & ad hoc*



Budgetting of Icon project

Project Title:	Icon project											
Project type:	Icon project											
Principal Investigator (PI):												
Expected start date:												
Project duration in Months:												
								2023				
	Function	Internal or external	Start date	End date	Fte	financing	Partner name	Tariff (price)	Hours (Quantity)	Cost	Tariff (price)	
Personnel												
person 1	Associate professor	Internal	07.2023	07.2026				€ 72		0	€ 72	
person 2	(leeg)							€ 0		0	€ 0	
vacancy 1	(leeg)							€ 0		0	€ 0	
vacancy 2	(leeg)							€ 0		0	€ 0	
etc	(leeg)							€ 0		0	€ 0	
etc	(leeg)							€ 0		0	€ 0	
Projectmanagement (including monitoring and reporting)												
person A	function 1									0		
....										0		
Total Personnel										0		
Other costs										0		
Materials										0		
...										0		
..										0		
Communication										0		
...										0		
External expertise										0		
										0		
										0		
										0		
										0		
										0		
										0		
										0		
										0		
										0		
Total Other costs										0		
Total Budget										0		
Total internal costs (TIU)												
Total external costs (TIU)												
Total												

Selection menus
 In various fields of the excel sheet, selection menus have been created. These give the choice options that are available choices. For example, cell B2 asks for the project type: Icon project or Growth project
 In the excel sheet, costs can be entered under a limited number of cost types. These cannot be modified. The number of rows per cost type can be supplemented.
 Job categories can also be chosen for the staff to be deployed. Rates are automatically linked to this.

Planning costs
 It is requested to spread the costs over the duration of the project in line with the planned expenses.
 The duration of an Icon Project is 3-5 years. A growth project 1-2 years.

Amounts to be requested
 The application of funds from the DSFS program has a bandwidth.
 Icon projects 300.000 - 600.000 euro
 Growth projects 12.500- 25.000 euro

Co financing
 The requested co-financing is at least 40% for the first group of projects, at least 20% for the second group
 The choice for financing is: internal or external financing (column C), internal inkind funding, external financing or a contribution from DSFS (column G)
 For each cost item, the start and end date are asked (columns D and E).
 Column F asks you to indicate for what percentage of an FTE the employee has been appointed.

Other costs
 For the other costs please specify what it is about and what the costs are. This can be, for example, a fixed amount for a product or service. Or the bet based on number of hours for an external rate.
 For staff of organisations participating in the consortium as cooperation partners, no subsidy for salary or research costs as a co-applicant can be applied for. However, it is possible to reimburse costs by hiring these organizations as third parties.

The costs of deploying external expertise may not exceed 10% of the total costs
 90% of the total costs must be borne by Tilburg University

Other points of attention
 Finance and Control must always draw up the budget when applying for a project or approve the budget that has been drawn up. For this, the entrance is the project controller (project control department).

A funding application within DSFS is funded with strategic funding from Tilburg University and contribution from the Schools. It is not possible to re-declare (part of) these costs within another university strategic project. It is also not possible to increase funding as co-financing for other strategic projects. In other words: financially, a project activity can only be part of 1 strategic programme.

**The budget format calculates 1640 hours per year for a full-timer; part-timers are prorated.
 The hourly rate is in the format when the position is filled. But in doing so, it is also necessary to fill in the number of hours per year.**

Mindlabs

Pitches Icon projects pre-proposals		
	Title	Name contact person
1	Goal oriented Digital Health Platforms	Ashley Metz
2	XAI Governance in Healthcare: Data, Algorithmic, and Organizational Perspectives	Carol Ou
3	DATA-CURE	Werner Liebrechts Claudia Zucca
4	Administrative Decision-Making in Times of Open Government: From Rule to Case Transparency	Johan Wolswinkel
	Library and IT Services (LIS)	Puck Wildschut
5	Digitally connected ecosystems	Panos Delimatsis
6	AI and inclusive labourmarket	Janneke Oostrom
7	CAVAAs: Let's spark democracy!	Naomi Kamoen
8	From impoverished to enriched brains	Margriet Sitskoorn
	Finance and Control	Gea Boudens
	Break	

9	DICE: Data and ai for ethIcal gamEplay	Frank Bosman
10	Democratizing AI in the context of Digital Twins for energy networks	Merel Noorman
11	How digital choice environments affect disparities in healthy and sustainable consumption behaviours.	Nynke van der Laan
12	Co-developing and implementing digital self-management tools for enhancing mental well-being	Inge Bongers Emiel Krahmer
	Mindlabs	Mirjam Siesling
13	The Future Health of our Society through Biobanking and Big Data	Elisabeth Huis in 't Veld
14	Governance of platform and data technologies in the digital society	Inge Graef
15	Social value creation through the use of digital ESG measurement and reporting	Eddy Cardinaels
	Interaction among participants, making follow-up appointments	

Questions?

DSFS@tilburguniversity.edu

<https://www.tilburguniversity.edu/intranet/organization-policy/strategy/digital-sciences-society/call-proposals-icon-projects>