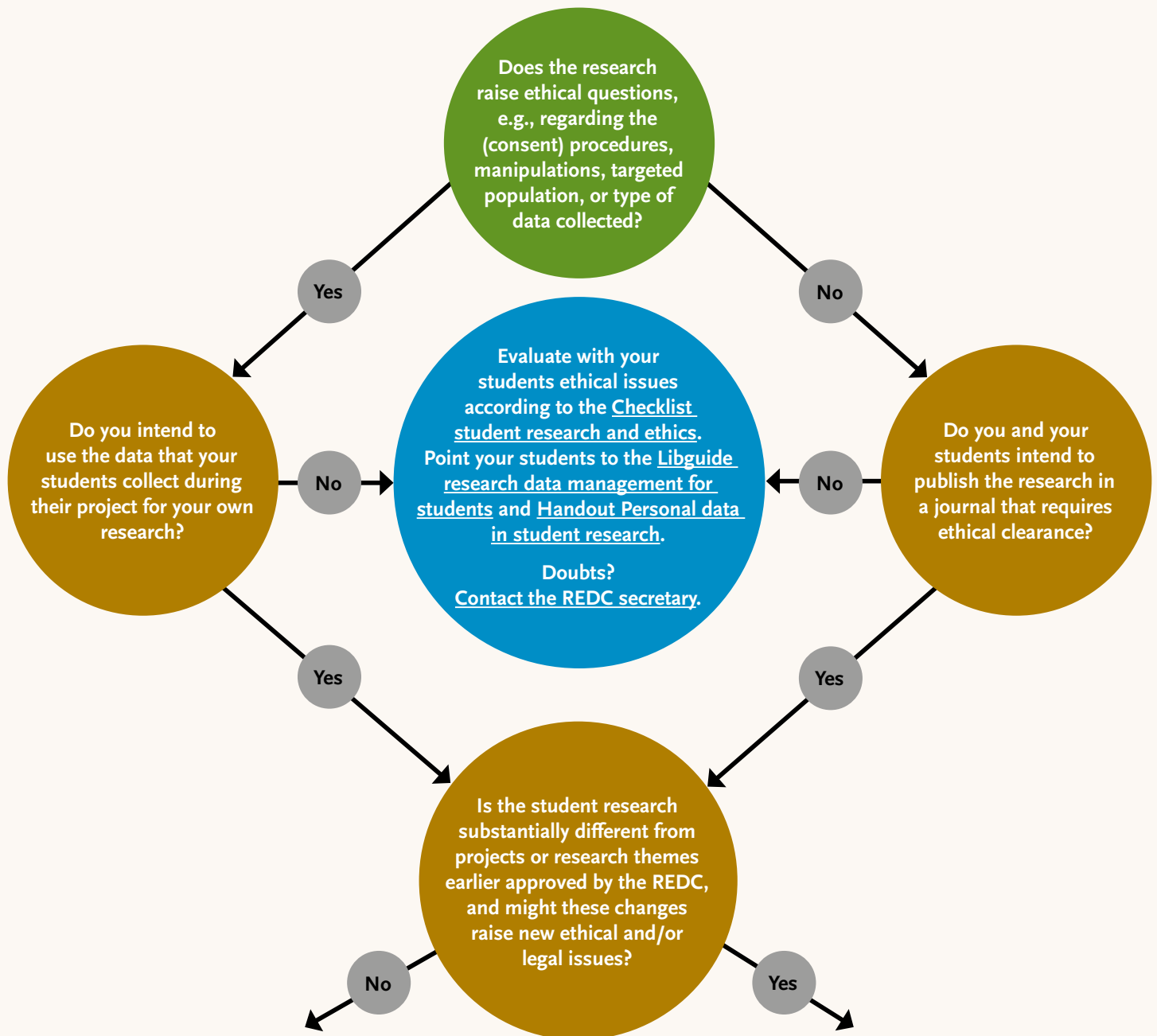


Evaluation procedure student research with human participants

Who? Teaching staff and researchers

What? Assess prior data collection if review by Research Ethics and Data Management committee is recommended

When? Students undertake research for a course or their Bachelor or Master's thesis



Any questions regarding research ethics, the GDPR, or data management?
You are encouraged to contact the secretary of the REDC via mail: tshd.redc@tilburguniversity.edu.

Tilburg School of Humanities and Digital Sciences