



# Study in the Netherlands at Tilburg University





# Study in the Netherlands at Tilburg University



The Netherlands



Tilburg University



Programs



Admission &  
Application



Costs



Questions

Tilburg is the 7th largest city in the Netherlands



Tilburg has 200.000 inhabitants...



...28.000 are students

Nature

A forest right next to the campus



# Theme parks



3 movie theaters, 140 bars & cafes, many festivals & a concert hall





## Tilburg University

Founded in 1927 as a business school

6 schools on one compact, green modern campus

17,600 students, 100+ nationalities

10+ international Bachelor's and  
40+ international Master's programs

Motto: Understanding Society



## Tilburg University Schools



Tilburg School of  
Economics and Management



Tilburg School of Humanities and Digital  
Sciences + University College Tilburg



Tilburg Law School



Tilburg School of Theology

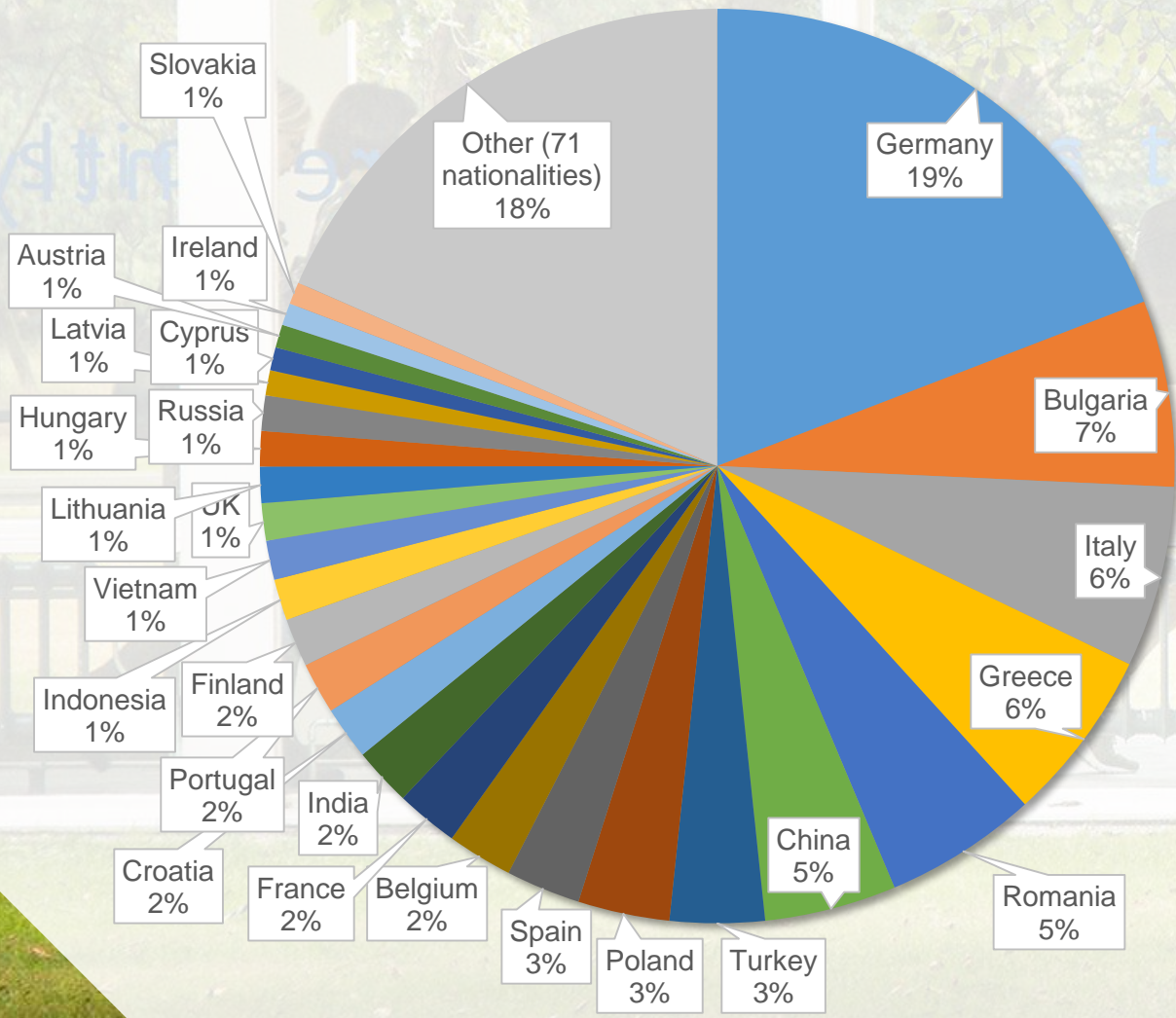


Tilburg School of Social and  
Behavioral Sciences



Jheronimus Academy of Data Science

# International environment



3,100 international students

More than 100 different nationalities

40 % of our lecturers come from abroad

More than 30 % international students in most international programs

## Why Tilburg University?



Strong focus on global issues



High quality education



Green campus



Leader in the field of Business, Economics, Psychology and Law



Lots of opportunities for extracurricular activities



Student Counseling



International environment

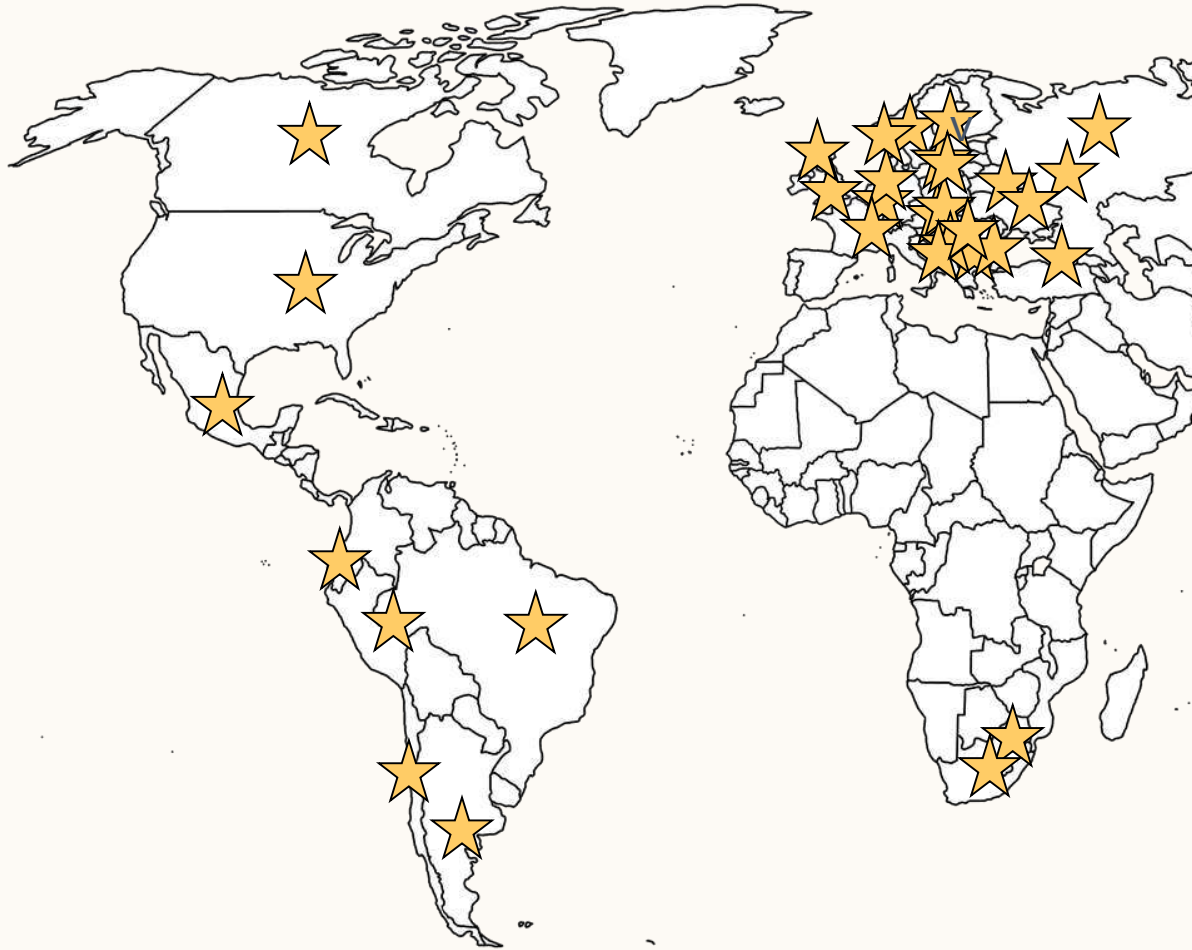


Exchange partners around the world



Extra facilities: Career Center, Language Center, Sports Center

## Exchange partners



### Some prominent exchange partners:

- Bocconi University, Italy
- University of Barcelona, Spain
- Aarhus University, Denmark
- Wirtschaftsuniversität Wien, Austria
- Boğaziçi University, Turkey
- Singapore Management University (SMU), Singapore
- University of New South Wales, Australia
- University of Sao Paulo, Brazil
- University of Waterloo, Canada
- University of Hong Kong, Hong Kong
- University of Washington, United States

# World Rankings 2019



## Times Higher Education

# top 250 overall

# 33 in Business and Economics

# 52 in Law

# 51 in Psychology



## Shanghai

# 5 in Business Administration

# 12 in Finance

Top #75 in Economics, Law, Public Administration, Psychology, and Sociology



## QS World University

# 41 Economics & Econometrics

# top 100 in Accounting & Finance, Business & Management, Law & Legal Studies, and Psychology



## US News Best Global Universities

# 17 in Economics and Business

# 77 in Psychology

## Accreditations



**All programs**  
Dutch-Flemish Accreditation Organization



**Tilburg School of Economics and Management**  
AACSB accreditation



**Tilburg School of Economics and Management**  
QTEM Network

## Rankings: the Netherlands

Rankings based on student satisfaction

### **Elsevier Higher Education Review**

Top three overall ranking in the Netherlands

6 of our Bachelor's & 7 of our Master's programs are #1 in their field



### **Keuzegids Universities**

8 of Tilburg University's programs are **top rated programs**



A smiling man in a blue and white checkered shirt is talking to a woman in a white shirt on a balcony. In the background, there are other people, a building with white slats, and green trees.

## Services & support for international students

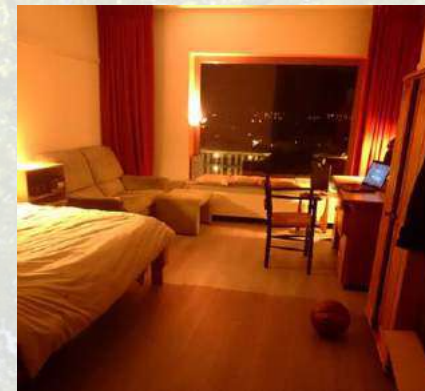
- ✓ Immigration services
- ✓ Tilburg University Summer School
- ✓ Registration Days in August
- ✓ TOP Week
- ✓ Buddy system



## Housing

- ▶ No housing offered by the university
- ▶ High demand for student housing in Tilburg; difficult to find housing
- ▶ Start looking several months in advance!
- ▶ Housing Office can help you navigate the private market.

[www.tilburguniversity.edu/accommodation](http://www.tilburguniversity.edu/accommodation)





# Study in the Netherlands at Tilburg University



The Netherlands



Tilburg University



Programs



Admission &  
Application



Costs



Questions



# Tilburg University Programs



Bachelor's Programs



Master's Programs



## Our International Bachelor's Programs

- ▶ Completely taught in English
- ▶ Multicultural classrooms
- ▶ Interactive teaching: mix of lectures and tutorials
- ▶ Small class size (most programs)
- ▶ Group assignments
- ▶ Skills development
- ▶ Bachelor's BSA (Binding Study Advice): 42 ECTS in year 1

## Bachelor's programs

- ▶ BSc International Business Administration
- ▶ BSc Economics
- ▶ BSc Entrepreneurship & Business Innovation

- ▶ BSc Cognitive Science and Artificial Intelligence
- ▶ BSc Data Science
- ▶ BSc Econometrics and Operations Research

- ▶ LLB Global Law
- ▶ BA/BSc Liberal Arts & Sciences

- ▶ BSc Psychology
- ▶ BSc Global Management of Social Issues
- ▶ BSc International Sociology
- ▶ BSc Human Resource Studies: People Management

- ▶ BA Online Culture: Art, Media and Society
- ▶ BA Theology



## Economics, Business & Management

### **BSc International Business Administration:**

Focus on all aspects of Business: Marketing, Management, Accounting, and Finance.

### **BSc Economics:**

Strong foundation in Macro- and Micro Economics. Study real world and policy-related issues.

### **BSc Entrepreneurship & Business Innovation:**

Get ready to start your own business or become the driving force of change within an existing company or organization.



## Data Science, Econometrics, Mathematics & AI

### **BSc Cognitive Science and Artificial Intelligence:**

Link functions of the human brain with computers capable of intelligent behavior. Strong focus on computing skills, big data and the ethical and moral aspects of AI in society.

### **BSc Data Science:**

Learn to analyze and provide insights into the large amounts of data that today's society operates on, and how to give it meaning and value. Joint degree with TU Eindhoven.

### **BSc Econometrics and Operations Research:**

Use mathematics and statistics to optimize complex processes and apply these to economic and societal challenges, such as insurance, risk and asset pricing, or supply chain design.



## Social & Behavioral Sciences

### **BSc Psychology:**

Study human behavior and specialize in one of 9 different majors and minors. Our area of expertise lies in Economic, Forensic and Clinical Psychology.

### **BSc Global Management of Social Issues:**

Study complex societal challenges from a multidisciplinary point of view of social sciences. Focus on 'wicked problems', such as migration, climate change, or sustainable consumption.

### **BSc International Sociology:**

Study the dynamics between man and society and analyze social themes such as migration, poverty, inequality and cultural differences, and connect them to politics and policy.

### **BSc Human Resource Studies: People Management:**

Study the management of people at work by combining insights from Psychology, Management Studies, Sociology and Economics.



A photograph of three young men sitting at a long wooden table in a lecture hall. The man in the foreground is wearing a light blue striped shirt and is looking towards the right. The man in the middle background is wearing a dark blue blazer over a white t-shirt and is looking towards the camera. The man in the left background is wearing a black shirt and is looking towards the camera. A plastic water bottle is on the table in front of the man in the middle background.

Law

**LLB Global Law:**

Study the major legal systems in the world from a helicopter view, to prepare for a career in a setting where multiple legal systems come together.



TILBURG

UNIVERSITY

## Humanities, Culture & Communication

### **BA Online Culture: Art, Media and Society:**

Study the interplay of art, media, communication and culture in a world shaped by digitalization and globalization. Majors in Global Communication, Digital Media or Art in the Public Sphere.

### **BA Theology:**

Learn about the Christian faith in past and present and study Religious Studies, Sociology, Psychology, Philosophy, and History. Study the Bible in its original languages and learn to think critically about faith, people, and society.



University College Tilburg:  
Liberal Arts & Sciences

UNIVERSITY  
COLLEGE  
TILBURG

Approach complex issues from different perspectives and academic disciplines, allowing you to come up with creative solutions for challenges big and small.

Broad and in-depth knowledge: start with introductions in all majors, and choose one of them in the 2nd year:

- Arts and Humanities: Past - Present – Future (BA)
- Law in an International Context (BA)
- Business and Economics (BSc)
- Social Sciences: Human Behavior (BSc)
- Cognitive Neuroscience: Brain and Cognition (BSc)



# Tilburg University Programs



Bachelor's Programs



Master's Programs



## Our International Master's Programs

- ▶ Generally 1 year
- ▶ Extended Master's, Double Degrees, Research Master's programs: 1,5 – 2,5 years
- ▶ Taught in English
- ▶ More than 40 programs, more than 60 tracks



## Business & Management

- MSc Accountancy
- MSc Finance
- MSc Information Management
- MSc International Business Tax Economics
- MSc International Management
- MSc Marketing Management
- MSc Marketing Analytics
- MSc Strategic Management
- MSc Supply Chain Management
- MSc Research Master in Business

A group of students are sitting at a wooden table outdoors, engaged in a study session. A man in a blue and white checkered shirt is looking at a woman in a dark green top who is smiling. A laptop is open on the table. In the background, there is a large, modern building with many windows and some trees. A semi-transparent white box with a dark blue header is overlaid on the right side of the image, containing a list of Master's programs.

## Economics & Econometrics

- MSc Business Analytics and Operations Research
- MSc Econometrics and Mathematical Economics
- MSc Economics
- MSc Quantitative Finance and Actuarial Science
- MSc Research Master in Economics

## Communication, Digital Sciences, Culture & Philosophy

- MSc Business Communication and Digital Media
- MSc New Media Design
- MSc Communication and Cognition
- MSc Communication and Information Sciences
- MA Health Humanities
- MA Management of Cultural Diversity
- MA Art and Media Studies
- MA Digital Culture Studies
- MA Philosophy of Humanity and Culture
- MA Philosophy of Contemporary Challenges
- MA Research Master in Linguistics and Communication Sciences







## Law & Public Administration

- LLM European Law and Global Risk
- LLM International Business Law
- LLM International Business Tax Law
- LLM International Law and Global Governance
- LLM Labour Law and Employment Relations
- LLM Law and Technology
- MSc Public Governance: Public Administration, Economics and Law

## Social and Behavioral Sciences


- MSc Cognitive Neuropsychology
- MSc Economic Psychology
- MSc Health, Wellbeing and Society
- MSc Human Resource Studies
- MSc Organization Studies
- MSc Organizing for Global Social Challenges
- MSc People Management for Global Social Challenges
- MSc Politics, Policy and Societal Development
- MSc Positive Psychology and Well-being
- MSc Sociology
- MSc Work and Organizational Psychology
- MSc Research Master in Psychology
- MSc Research Master in Social and Behavioral Sciences





## Data Science

- MSc Business Analytics and Operations Research
- MSc Data Science and Entrepreneurship
- MSc Data Science and Society

A photograph of four diverse students walking together in a modern, brightly lit hallway. From left to right: a young woman with long brown hair wearing a grey tank top and black pants; a young woman with glasses wearing a white button-down shirt and a blue denim skirt; a young man with glasses wearing a blue shirt and a brown vest; and a young woman with short dark hair wearing a black sleeveless top and black pants. They are all smiling and looking towards the right. The hallway has a white wall on the right and a glass wall on the left. The ceiling is a grid of recessed lights.

## Theology

- MA Christianity and Society

## Go the extra mile!

### Double degree options

- ▶ Follow an additional Master's program
- ▶ Obtain an additional Master's degree

### Extended master

- ▶ Add 6 months to your program: gain international, work or research experience
- ▶ Exclusive skills workshops
- ▶ Available for students of TiSEM, TSB and the MSc Public Governance

### QTEM

- ▶ Network of internationally renowned universities and companies
- ▶ Quantitative-based one-year international study and internship program
- ▶ Available for students from TiSEM



**PHILIPS** Allianz  **Google** 



After your graduation



Simmons & Simmons



Booking.com

**pwc**

**ING**



Dirkzwager  
advocaten & notarissen

- “Search-year”: 1-year visa after graduation to look for a job in the Netherlands
- On average, our international graduates manage to have their first job within 3 months after graduation. 33% of the international graduates stay in the Netherlands.
- Opportunities to write your thesis with a multinational
- Career Service Center trains students for the job market
- A high demand for multidisciplinary skilled graduates
- A large job market in Benelux / EU

**SIEMENS**

**Heineken**



**NETFLIX**



**IFC** International Finance Corporation  
WORLD BANK GROUP





# Study in the Netherlands at Tilburg University



The Netherlands



Tilburg University



Programs



Admission &  
Application



Costs



Questions



## Bachelor's Admission Requirements – General overview

### Tilburg University accepts:

- ✓ Most **EU diplomas**
- ✓ **IB diploma** with an overall score of 24 or above.
- ✓ **American high school diploma** + 4 relevant Advanced Placement subjects with scores  $\geq 3$ ;
- ✓ **A-levels:** At least 3 GCE A-levels in general, academic subjects with grades A-C; plus 3 GCSE subjects with grades A-C (six different subjects in total).
- ✓ **Bulgaria:** Diploma Za Sredno Obrazovanie (DZSO), Academic Comprehensive Stream and a class grade point average  $\geq 5$
- ✓ A list of **most commonly accepted diplomas** is available on Tilburg University's website. If your diploma is not listed, an individual assessment will be made. Submitting an application is free!



## Additional Bachelor's Admission Requirements

### English language proficiency with one of the following tests

- Academic IELTS (min. 6.0 overall and min. 5.5 on parts);
- TOEFL (internet-based: 80);
- Cambridge C1 advanced (formerly CAE);
- Cambridge C2 proficiency (formerly CPE);

#### *2 exceptions:*

- Global Law: IELTS 6.0 and 6.0 on all parts;
- Data Science: IELTS 6.5 and 6.0 on all parts / TOEFL 90;

### Math requirement

Some of our programs have additional Math requirements, most notably:

- **High math requirement:** Econometrics and Operations Research, Data Science
- **Medium math requirement:** Business, Economics, and Cognitive Science & Artificial Intelligence
- School of Social & Behavioral Sciences:
  - The student has taken **Mathematics as an examination subject** in their final year of high school, and received a passing grade

## Required documents per program, besides transcript & English language test

Program	Required Documents	Interview
International Business Administration	Motivation, CV (template on website)	No
Economics	Motivation, CV (template on website)	No
Econometrics and Operations Research	Motivation, CV	No
Entrepreneurship and Business Innovation	Motivation, CV	t.b.d.
Global Law	Motivation, CV	Yes
Psychology	Motivation & test (instructions given after deadline)	No
Global Management of Social Issues	CV + Motivation + Essay (application form website)	Yes
International Sociology	CV + Motivation (application form website)	No
Human Resource Studies: People Management	CV + Motivation + Essay (application form website)	Yes
Cognitive Science & Artificial Intelligence	Motivation letter	No
Online Culture: Art Media and Society	No extra documents required	No
Liberal Arts & Sciences	Motivation, Essay	Yes
Data Science	No extra documents required	No
Theology	CV + Motivation + Essay (application form website)	No

**Please note:** the information on this slide can change from year to year. Therefore always review program requirements on the program website.

## Master's Admission Requirements

### **Diploma requirement**

- ✓ Bachelor's degree in a related field to the program you want to apply for.

### **Prove your English language proficiency with one of the following tests**

- ✓ Academic IELTS: minimum overall score of 6.5, minimum score of 6.0 for all parts;
- ✓ TOEFL (internet-based): minimum score of 90;
- ✓ Cambridge C1 Advanced (formerly CAE): score A, B or C;
- ✓ Cambridge C2 Proficiency (formerly CPE): score A, B or C.

### **Additional requirements (please check your preferred program!)**

- ✓ Programs in the field of Economics require a GRE.
- ✓ Programs in the field of Business require a GMAT.

*Slightly higher requirements apply for the Research Master's programs, selection is done on a case-by-case basis*

## How to apply

### Step 1

Register for the program of your choice in **Studielink** [www.studielink.nl](http://www.studielink.nl)

### Step 2

Receive an invitation to create an application, and upload your application package in **Osiris**

### Note

Always **check our website** for a complete overview of the admission requirements & documents, deadlines and so on!

### Bachelor's application deadlines

**May 1<sup>st</sup>** for most of our Bachelor's programs  
**January 15<sup>th</sup>** for BSc Psychology

### Master's application deadlines

**February intake:**  
December 1<sup>st</sup> (EU) | October 1<sup>st</sup> (non-EU)

**September intake:**  
July 1<sup>st</sup> (EU) | April 1<sup>st</sup> (non-EU)



# Study in the Netherlands at Tilburg University



The Netherlands



Tilburg University



Programs



Admission &  
Application



Costs



Questions

## Tuition Fee & Costs of Living

### Tuition Fees 2020-2021

**Non-EU/EEA students**  
€ 2,143 - € 14,600 per year




**EU/EEA + Swiss students**  
€ 2,143 per year

### Estimated cost of living

	Monthly	Unique costs
Accommodation	€ 350 – € 700	Visa (if applicable) € 300
Food, drinks, transportation	€ 300	Second-hand bicycle € 70
Books & readers	€ 75	Sports card € 130
Insurances (health, liability, travel)	€ 45	

## More information

- Talk to us here! 😊
- Open Days in October, November and February
  - ✓ Campus Tours
  - ✓ Information Sessions about the programs
  - ✓ Information Market
- Student-for-a-Day events twice a year
- Drop-by-days all year round
- Brochures online & offline  
[www.tilburguniversity.edu/mybrochure](http://www.tilburguniversity.edu/mybrochure)

-  <http://www.facebook.com/TilburgUniversity>
-  <http://www.youtube.com/TilburgUniversity>
-  <http://www.instagram.com/TilburgUniversity>
-  [http://www.twitter.com/TilburgU\\_campus](http://www.twitter.com/TilburgU_campus)
-  [www.tilburguniversity.edu/contactus](http://www.tilburguniversity.edu/contactus)

### Upcoming events

**Saturday 15 February 2020:** Bachelor Open Day

**Saturday 18 April 2020:** Master Open Day

▶ [www.tilburguniversity.edu/contactus](http://www.tilburguniversity.edu/contactus)



Thank you for your attention! Questions?

