

# INSPIRATION SHEET PUBLIC GOVERNANCE

## PROFESSIONAL FIELD

## EXTRACURRICULAR



### OPPORTUNITIES AFTER THE MASTER

#### WHERE OUR ALUMNI WORK

##### Government

Local government  
Regional or provincial government  
National ministries  
Independent agencies and inspectorates  
Government think tanks  
National embassies  
European Union institutions  
Global institutions

##### Semi-government

Health care (such as hospital management)  
Education and research (such as at a secondary school, or a university)  
Housing corporations

##### Non-Governmental Organizations

National and international advocacy organizations (think of Greenpeace, Amnesty International)

##### Private sector

Management and strategy consultancy (such as Berenschot, PwC, McKinsey)  
Research consultancy and think tanks (in the fields of economics, politics etc)  
Regulatory affairs (in national or multi-national corporations)  
Lobby firms or interest groups

##### Education

Tilburg University  
Lecturing at college or university  
PhD or other research



#### POTENTIAL STARTER POSITIONS

- Trainee
- Project Manager
- Analyst
- Consultant
- Policy Advisor
- Program Manager
- Researcher

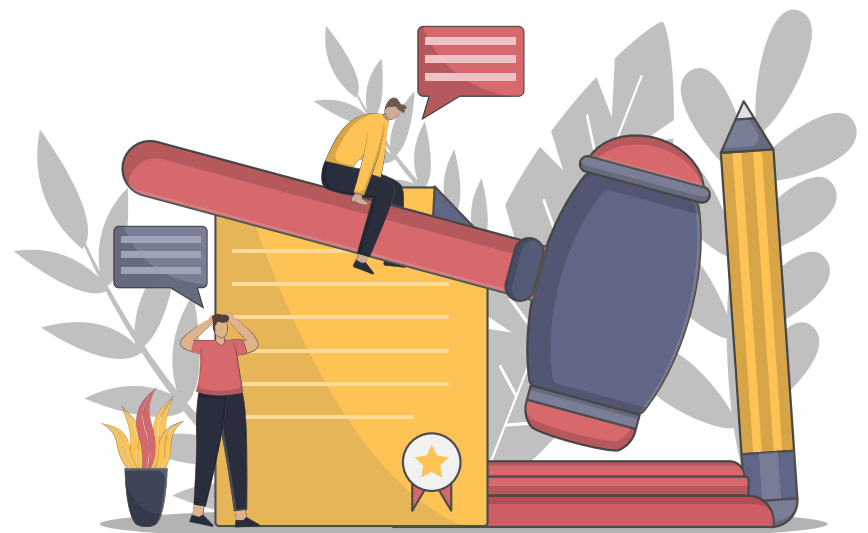
Where can I find starter positions?

- [TiU Career Portal](#)
- [Working at Tilburg University](#)
- [TraineeshipPlaza](#)
- [EURES](#)
- [Careers international](#)
- [Indeed](#)
- [LinkedIn](#)
- [Nationale Vacaturebank](#)
- [Working abroad](#)



#### IMPORTANT COMPETENCES

- Stress resistance
- Communication skills (both orally and in writing)
- Persuasiveness
- Multi-disciplinary
- Organizational skills
- Capacity to empathize
- Analytical skills
- Language skills
- Logical reasoning
- Respectful debating skills
- Negotiation skills
- Reflection skills
- Listening and summarizing skills
- Debate and argumentation skills
- Deep understanding of political and social analysis
- Capacity to work with multi-cultural teams and people
- Conflict resolution and problem-solving



#### T-SHAPED PROFESSIONAL

- Self-reflection
- Integrity
- Proactivity
- Sense of responsibility
- Deep understanding of legality and judgement
- Critical towards others and yourself
- Understanding of differing opinions
- Strategic debating and argumentation

[CLICK HERE FOR MORE INFORMATION!](#)



#### ALUMNI PROFILES

**Nawal Amhaouch**, Policy advisor for a Member of the European Parliament

**Ralfs Grinvalds**, Trainee at the European Education and Culture Executive Agency (EACEA)

**Maartje de Groot**, Researcher Global Economics at SEO Amsterdam Economics

**Lars van Bladel**, Consultant digital transformation in the public sector at Berenschot

**Lieve Timmermans**, Management Advisor at the Province of Noord-Brabant



#### ALUMNI MENTOR PROGRAM

If you are (an international) student or have graduated less than a year ago, then Student Career Services can put you in touch with interesting alumni. During this contact you can learn more about the alumni's career. Which choices are important? What does an employer expect from a young professional? In short, ask all your questions so you can get a better idea of your possibilities on the labour market.

[CLICK HERE FOR MORE INFORMATION!](#)



[WWW.TILBURGUNIVERSITY.EDU/STUDENTCAREERSERVICES](http://WWW.TILBURGUNIVERSITY.EDU/STUDENTCAREERSERVICES)

TILBURG  
UNIVERSITY  Student Career  
Services

# INSPIRATION SHEET PUBLIC GOVERNANCE

## PROFESSIONAL FIELD

## EXTRACURRICULAR

ACTIVITIES BESIDES YOUR STUDY



### BOARD POSITIONS

**Study associations**  
- [Magister JFT | Juribes](#)  
- [ELSA](#)  
**Student associations**  
**Sports associations**



### VOLUNTEERING

[180Degrees](#)  
[Enactus](#)  
[Sustainability Factory](#)  
[AIESEC](#)  
[Amnesty International](#)  
[Serve the City](#)  
[Rode Kruis](#)  
[UNICEF](#)  
[Volunteers](#)  
[Ailola Buenos Aires](#)



### STUDENT PARTICIPATION

**Participation at Tilburg University**  
**University councils**  
- Student parties [SAM](#) or [Front Schools](#)  
**School Councils - [Law School Council](#)**  
- [Program Committees](#)  
**Participation in the Divisions**  
- [SALIS](#)  
**National Participation**  
- [Interstedelijk StudentenOverleg \(ISO\)](#)  
- [Landelijke StudentenVakbond \(LSvB\)](#) (only in Dutch)  
- [National Student Survey \(NSE\)](#)  
**Tilburg City Council**  
- [Studentenraad Tilburg](#) (only in Dutch)



### SIDE JOBS

<a href="#">StudentCrew</a>	<a href="#">Studentenvacature.nl</a>
<a href="#">Bijbanen.nl</a>	<a href="#">StudentenJobs</a>
<a href="#">CareerJet</a>	<a href="#">Integrand</a>
<a href="#">Unipartners</a>	<a href="#">International Students Work</a>



### SUMMER SCHOOLS

[Netherlands-Asia Honours Summer school \(NAHSS\)](#)  
[Tilburg University Summer School \(TUSS\)](#)



### OTHERS

[Public Speaking Program](#)  
[United Netherlands Delegation Program](#)  
[Model United Nations Tilburg](#)  
[Studium Generale Certificate](#)



### INTERNSHIPS

[Career Portal](#)  
[AIESEC](#)  
[Unipartners](#)  
[Academic Transfer](#)  
[Europlacement](#)  
[Intern abroad](#)  
[Integrand](#)  
[Agora](#)  
[Magnet.me](#)



### LANGUAGE COURSES

As a student at Tilburg University, you can take free language courses. You will receive 12 digital language vouchers at the start of your studies. You can use them for a course in English, Italian, Chinese and many other languages!

**[CLICK HERE FOR MORE INFORMATION!](#)**



### TALENT PROGRAMS

[Outreaching Honors Program](#)  
[Honors Program The Societal Challenge of Migration](#)



### WORKSHOPS & COURSES

**Personal development**  
• [Positive Perfectionism](#)  
• [Stress Management](#)  
**Study choice**  
• [Reorientation on Study Program](#)  
• [Orientation on Master's Choice](#)  
**Study skills**  
• [Thesis workshop 'Back on Track'](#)  
• [Thesis Together](#)  
**Student wellbeing**  
• [Relaxation sports](#)  
• [Mindfulness](#)  
**Preparation for the Labor Market**  
• [Master your Assessment](#)  
• [Personal effectiveness](#)  
• [Boost your resilience: From study to work](#)  
• [Masterclass Chat GPT](#)  
**Skills for the board of study and student associations**  
• [Customized Workshops](#)  
• [Skills program](#)

